

## About Dr Hong Ga Sze

**Dr Hong Ga Sze was born in Singapore in 1959. He was educated in the Raffles Institution, a premier Singapore secondary school. He went on to study Medicine at the National University of Singapore from which he graduated with Bachelors in Medicine and Surgery in 1983. His surgical training culminated in him becoming a member of the Royal College of Physicians and Surgeons of Glasgow, Scotland in 1988 and a Fellow of the Academy of Medicine, Singapore in 1998.**



Dr Hong Ga Sze had by then acquired an interest in surgical oncology, i.e. cancer surgery. Under the Human Manpower Development Plan awarded by the Singapore Government, Dr Hong underwent post-graduate training in surgical oncology in the United Kingdom from 1991 to 1993. He worked as a Senior Registrar in the Royal Marsden Hospital, London and Christie Hospital, Manchester. Both are top UK cancer hospitals. While in London, he advanced his knowledge and research interests in cancer genetics by obtaining a Master of Science in Human Molecular Genetics from the Imperial College of Science, Technology and Medicine, St Mary's Hospital, University of London in 1992.

Dr Hong was appointed a Surgical Consultant in the Singapore General Hospital in 1995 and Senior Surgical Consultant in 1999. He became the first full time surgeon of the National Cancer Centre, Singapore in 1999. He helped develop the National Cancer Centre by holding the posts of Clinical Co-ordinator as well as the founding Head of the Department of Cancer Informatics.

Dr Hong left for private practice at the Mt Elizabeth Medical Centre in 2001. Due to his interests in teaching and research he accepted an appointment as Adjunct Associate Professor, Department of Surgery National University Hospital, National University of Singapore from 2001 to 2013.

In 2005 Dr Hong founded the KK Breast Department at the Kandang Kerbau Women's and Children's Hospital. It is the only Department dedicated to breast care in Singapore. He remained the Head and Senior Consultant of the Department till 2014.

Dr Hong was an Attending Faculty, General Surgery, Residency Program, SingHealth Academy. Dr Hong was a member of the Inquiry Committee Panel and Disciplinary Committee Panel, Singapore Supreme Court from 1 December 2003 to 2013. He was elected as a council member, Singapore Medical Council in 2013 for a 3-year term.

Dr Hong Ga Sze  
Consultant Surgeon  
Breast, Head & Neck  
and General Surgery

MBBS (S'pore), FRCS (Glasg), FAMS  
MSc (Human Molecular Genetics, London)

Founding Head and Head & Senior Consultant  
Breast Department  
KK Women's and Children's Hospital  
(2005 to 2014)

# Contact Us

## **Address**

#12-15 Mt Elizabeth Medical Centre  
3 Mt Elizabeth  
Singapore 228510

## **For Appointments**

(During Clinic Opening Hours)

TEL: 65-62350509

(After Clinic Opening Hours)

FAX : 65-62350402

EMAIL : [enquiryhgs@gmail.com](mailto:enquiryhgs@gmail.com)

## **Clinic Opening Hours**

Monday to Friday

8:30 am to 5:00 pm

Saturday

8:30 am to 1:00 pm

(We are closed all Sundays and Public Holidays)

## **For Emergency after Office Hours**

65-65358833

# Links

[www.kkh.com.sg/breasttalk](http://www.kkh.com.sg/breasttalk)

[www.cancer.gov](http://www.cancer.gov)

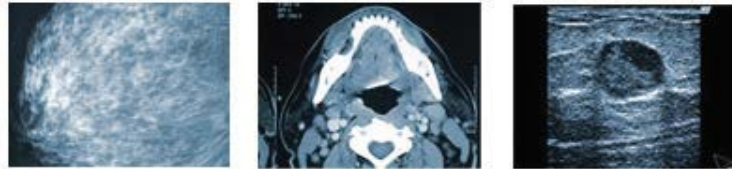
[www.cancer.org](http://www.cancer.org)

[www.webmd.com](http://www.webmd.com)

[www.nhs.uk/conditions/Cancer-of-the-breast-female](http://www.nhs.uk/conditions/Cancer-of-the-breast-female)

[lensray.blogspot.com](http://lensray.blogspot.com)

# Surgical Services



## Breast Surgery

- Screening for breast cancer
- Minimally invasive breast biopsy including Mammotome biopsy, core cut biopsy and fine needle aspiration biopsy
- Management of benign breast disease like breast infection, breast cysts and nipple discharge
- Management of breast cancer including breast conservation surgery, breast reconstruction and sentinel node biopsy
- Major chest wall resection and reconstruction for recurrent cancer

## Head and Neck Surgery

- Excision of facial skin tumours
- Management of thyroid nodules, goiter and thyroid cancers including endoscopic assisted thyroid surgery
- Management of hyperparathyroidism
- Parotid tumour / cancer surgery
- Submandibular gland / duct surgery
- Resection of neck tumours
- Neck dissections
- Major resection of face, oral cavity, throat and larynx cancers
- Head and Neck reconstruction

## General Surgery

- Excision of skin lumps
- Circumcision
- Management of inguinal and incisional hernias including minimally invasive / laparoscopic and open hernia repair
- Appendicectomy including minimally invasive / laparoscopic and open appendicectomy
- Management of gall stone disease including minimally invasive / laparoscopic and open cholecystectomy
- Gastric surgery
- Abdominal emergencies including gastrointestinal bleeding, intestinal obstruction and acute abdomen

## Presentations and Publication

1. Breast ductal carcinoma in situ presenting as recurrent non-puerperal mastitis: case report and literature review. Liong YV, Hong GS, Teo JG, Lim GH.  
World J Surg Oncol. 2013 Aug 7;11(1):179. doi: 10.1186/1477-7819-11-179. Review.
2. Attitudes towards fertility preservation in female cancer patients. Loi K, Lau M, Loh SF, Tan YY, Hong GS, Chan MY, Tan AM.  
J Reprod Med. 2010 Sep-Oct; 55(9-10):411-6.
3. Faculty member, 5th Annual Scientific Meeting & Annual Scientific Meeting, Malaysian Association of Plastic, Aesthetic and Craniomaxillofacial Surgeons, 15-17 March 2002. Lectures delivered: Skin sparing mastectomy and immediate breast reconstruction, Chest wall resection and reconstruction in breast cancer.
4. MRSA breast abscesses in postpartum women, Chuwa E, Wong CM, Tan YY, Hong GS.  
Asian J Surg 2009 Jan; 32(1):55-8.
5. A molecular signature of the Nottingham prognostic index in breast cancer, Yu K, Lee CH, Tan PH, Hong GS, Wee SB, Tan P.  
Cancer Res 2004 May; 1;64(9) 2962-8.
6. Founder mutation in the BRCA1 gene in Malay breast cancer patients in Singapore, Lee AS, Ho GH, Oh PC, Balram C, Ooi LL, Lim DT, Wong CY, Hong GS.  
Hum Mutat 2003; Aug;22 (2):178.
7. Well differentiated thyroid carcinoma: factors predicting recurrence and survival, Lim LH, Soo KC, Chong YK, Gao F, Hong GS, Lim TH.  
Singapore Med J 2002 Sep; 43(9):457-62.
8. Genotoxicity of human breast milk from different countries, Martin FL, Cole KJ, Weaver G, Hong GS, et al.  
Mutagenesis 2001 Sep 16; (5):401-6.
9. A case of alpha-fetoprotein producing gastric cancer, Foo KF, Tan CK, Wong KK, Hong GS, Ngan BY, OngHoAnn.  
Acad Med Singapore, 2001 Jan; 30:58-61.
10. Faculty member, IAEA Workshop on Radionuclide Breast Imaging, Singapore 5-6 August 2000. Lectures delivered: Diagnostic problems in management of breast cancer, Sentinel node localisation and biopsy: SGH experience, The intra-operative gamma probe: surgical techniques.
11. Management of intraparotid facial nerve schwannomas, Chong KW, Hong, GS, Chung YF, Khoo ML et al.  
Aust N Z J Surg. 70(10): 732-4 Oct 2000.
12. Splenic Angiosarcoma : An unusual cause of bleeding gastrointestinal tract, Chung YF, Busmanis I, Hong GS, Soo KC.  
Singapore Medical Journal 40(2): 106-8 Feb 1999.
13. Epidemiology of Warthin's Tumour of the parotid gland in an Asian population, Hong GS, Br J Surg. 86(5): 661-4 May 1999.
14. Primary Reconstruction after Extensive Chest Wall Resection, Fui AC, Hong GS, Ng EH, Soo KC  
Aust N Z J Surg 68(9): 655 : 9 1998 Sep
15. Flexible Endoscopic Tracheo-esophageal Puncture Under Local Anaesthetic, Hong GS, John AB, Theobald D, Soo KC.  
The Journal of Laryngology and Otolaryngology, November 1995 109: 1077 - 1079.

## Presentations and Publication

16. Oropharyngeal Reconstruction after Ablation of Head and Neck Cancer. Annual Scientific Congress, Royal Australasian College of Surgeons 1995.
17. A Study of the Molecular Genetics of Desmoid Tumours Deep Fibromatosis. GS Hong in collaboration with The Haddow Laboratories, The Institute of Cancer Research, Sutton. Thesis for the Msc course, Human Molecular Genetics, St Mary's Hospital, London.
18. Primary Reconstruction After Chest Wall Resection in Breast Cancer. GS Hong, KC Soo. Ann Acad of Medicine Singapore 1993, 22 (2): 247-250.
19. Massive Lower Gastrointestinal Haemorrhage from a Splenic Artery Psuedoaneurysm. GS Hong, CY Wong, R Nambiar. Br J Surg 1992, 79:174.
20. Oestrogen Receptors in Well Differentiated Thyroid Cancers. GS Hong, ITY Sng, KC Soo. Ann Acad of Medicine Singapore 1991, 20:767-769.
21. Dieulafoy's Disease : The Cause of Massive Upper Gastrointestinal Haemorrhage in Two Asian Women. GS Hong, J Murugasu, HK Ang, A Thomas. Ann Acad of Medicine Singapore 1991, 20:784-788.
22. CT Scan in blunt abdominal trauma : Initial Experience. GS Hong, CL Chua. 23rd Combined Surgical Meeting, November 1990.
23. Parotid Neoplasm : The Importance of adenolymphoma. GS Hong, KC Soo. 24th Annual Combined Surgical Meeting, November 1990.
24. Prospective Audit of Bleeding Gastric Ulcers. GS Hong, R Nambiar. 2nd Scientific Meeting, Singapore General Hospital, February 1990.
25. Bacterial and Myocotic Otological Infection in Singapore. VTK Chow, B Ho, GS Hong, TC Liu. Journal of Hygiene, Cambridge 1986, Oct 97 (2) 385-92.
26. Prevalence of Human Papillomavirus Types 11 and 16 in Foreskin of Normal Males. V Chow, GS Hong, Hans-Ulrich Bernard. Acta Medica Nagasaki.